

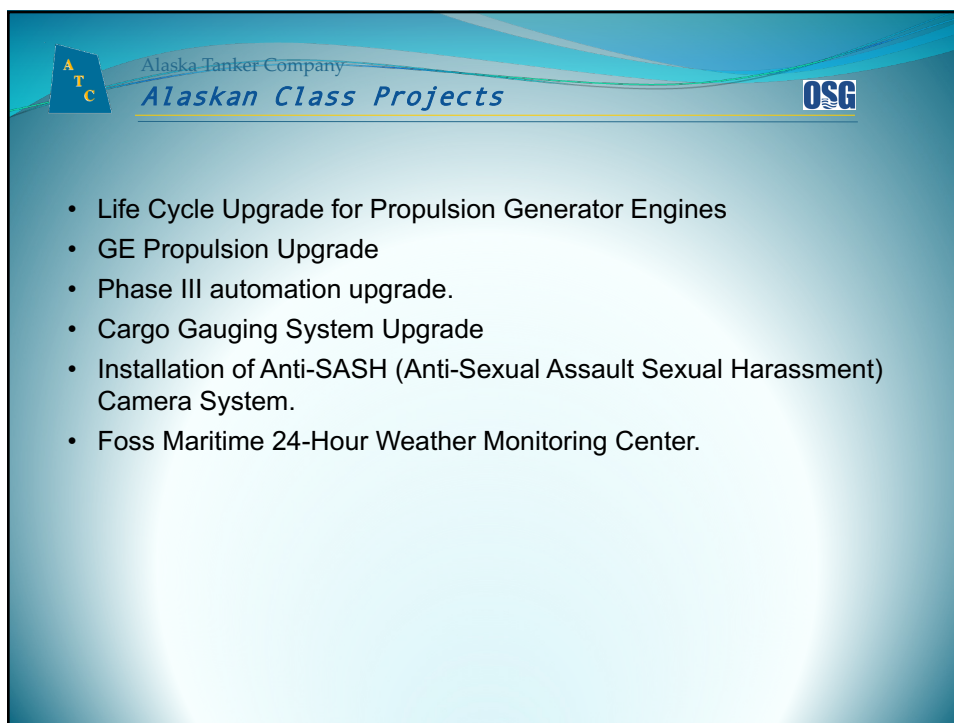


This presentation slide features a blue gradient background with three photographs. The top-left photo shows a close-up of a ship's superstructure with 'ATC' in yellow letters. The bottom-left photo shows a red and white tanker ship docked at a pier. The right-side photo shows a large tanker ship sailing on a body of water with snow-capped mountains in the background. The text 'Alaska Tanker Company' is centered in bold, with 'September 2025' below it. The ATC and OSG logos are in the bottom right corner.

Alaska Tanker Company
September 2025

ATC OSG

1




This presentation slide has a blue gradient background. At the top, it features the ATC logo, the text 'Alaska Tanker Company', the title 'Alaskan Class Projects' in italics, and the OSG logo. Below the title is a bulleted list of projects.

Alaska Tanker Company
Alaskan Class Projects OSG

- Life Cycle Upgrade for Propulsion Generator Engines
- GE Propulsion Upgrade
- Phase III automation upgrade.
- Cargo Gauging System Upgrade
- Installation of Anti-SASH (Anti-Sexual Assault Sexual Harassment) Camera System.
- Foss Maritime 24-Hour Weather Monitoring Center.


2

Alaska Tanker Company
Alaskan Class Engine Lifecycle Upgrade (LCU) 

Everllence Original Equipment Manufacturer (OEM), formerly MAN, develops Lifecycle Upgrade Path

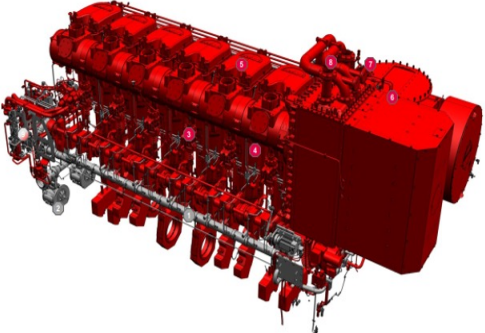
- In lieu of engine renewal, Everllence developed path to upgrade existing engines to newer, more robust, fuel-efficient engine design
- New Engines 6L 51/60 - 6300 kW (8442 hp), 514 RPM – Total power 25,200 kW (33,768 hp)
- Engines considered “Zero” operating hour engines by manufacturer and Classification Society
- Modern design with latest technology design, materials and components
- Significant improved fuel consumption
- Reduced lube oil consumption
- Future “Dual Fuel” Capable (LNG, Methanol, NH₄)

3

Alaska Tanker Company
Alaskan Class Engine Lifecycle Upgrade (LCU) 

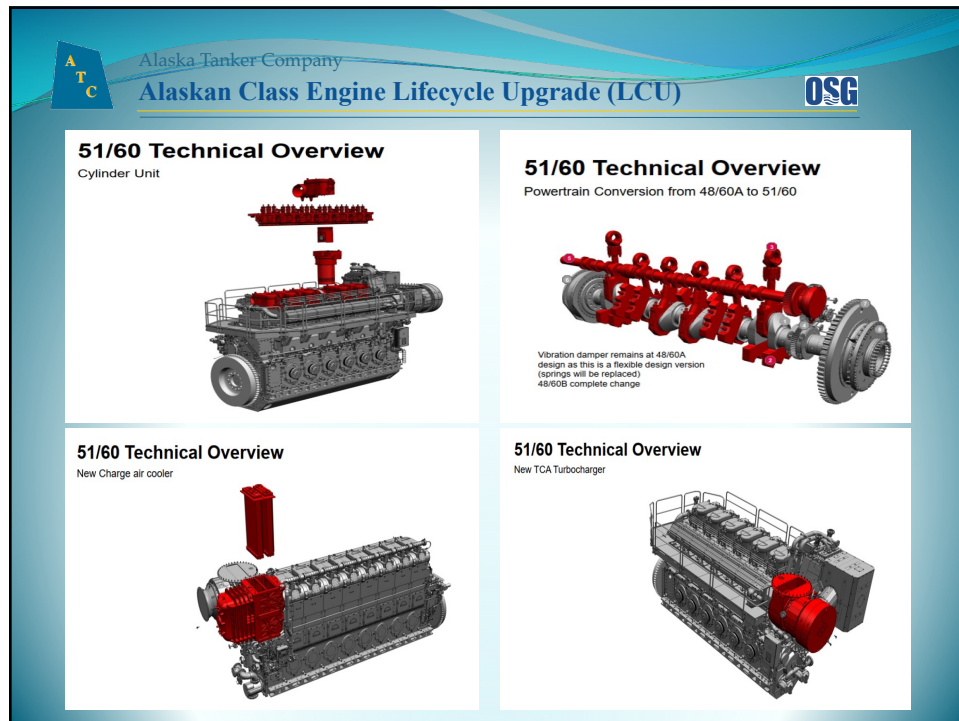
51/60 Technical Overview

Upgrade Components for Conversion from 48/60A to 51/60

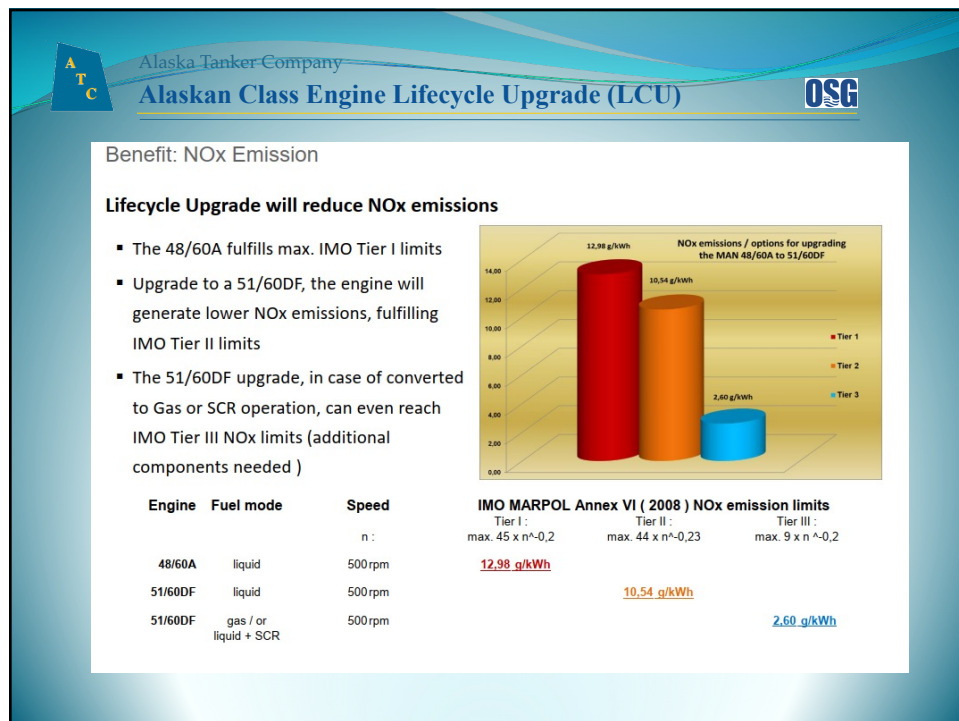


	Kept from 48/60A	Modified acc. to 51/60DF
Lube oil system ①	X	
Lube oil pumps ②	X	
Fuel system ③		X
Cylinder Unit ④		X
Valvetrain ⑤		X
Charge air System ⑥		X
Exhaust gas System ⑦		X
Cooling Water System ⑧		X
Control air System ⑨	X	X

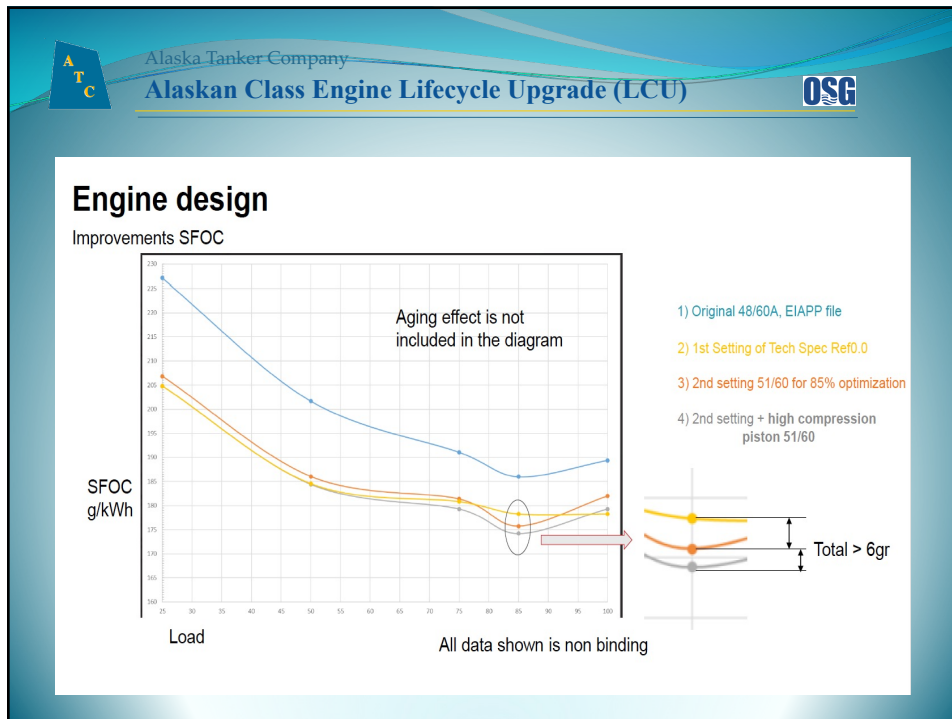
4



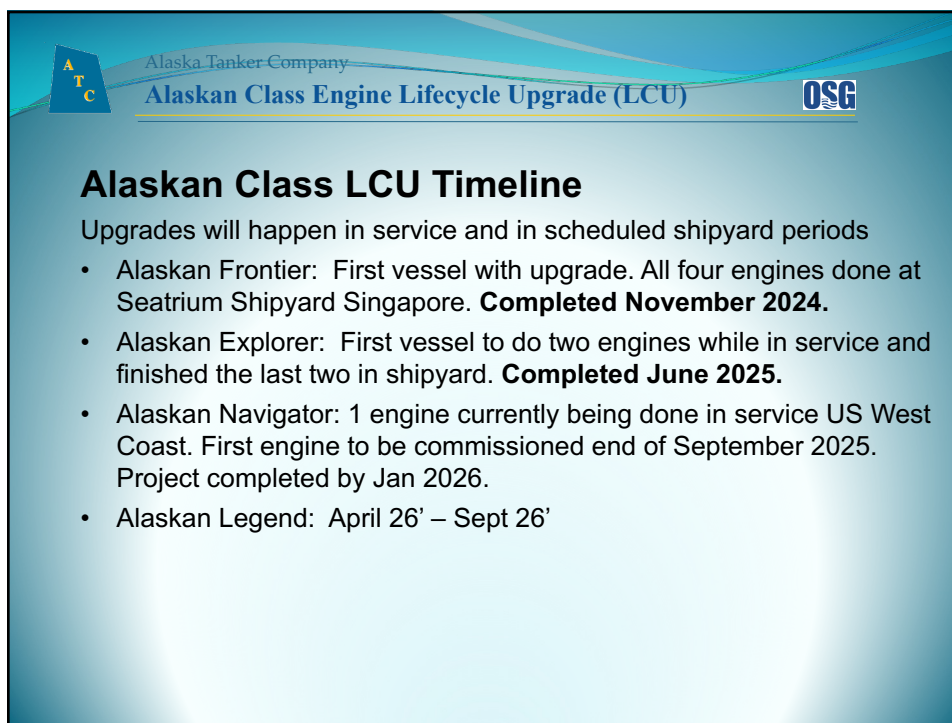
5



6



7

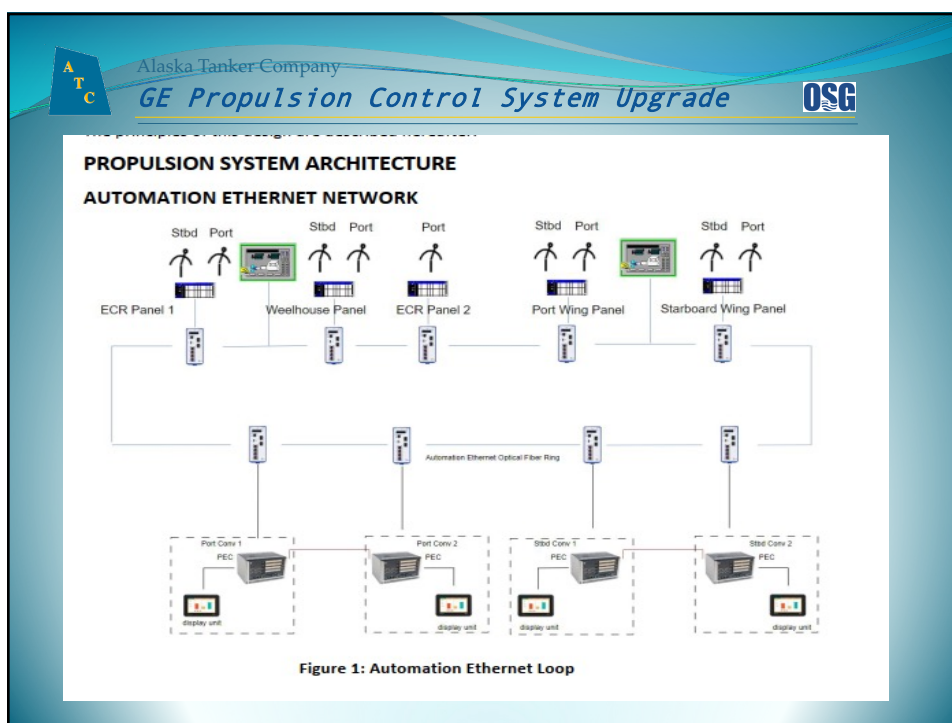


8

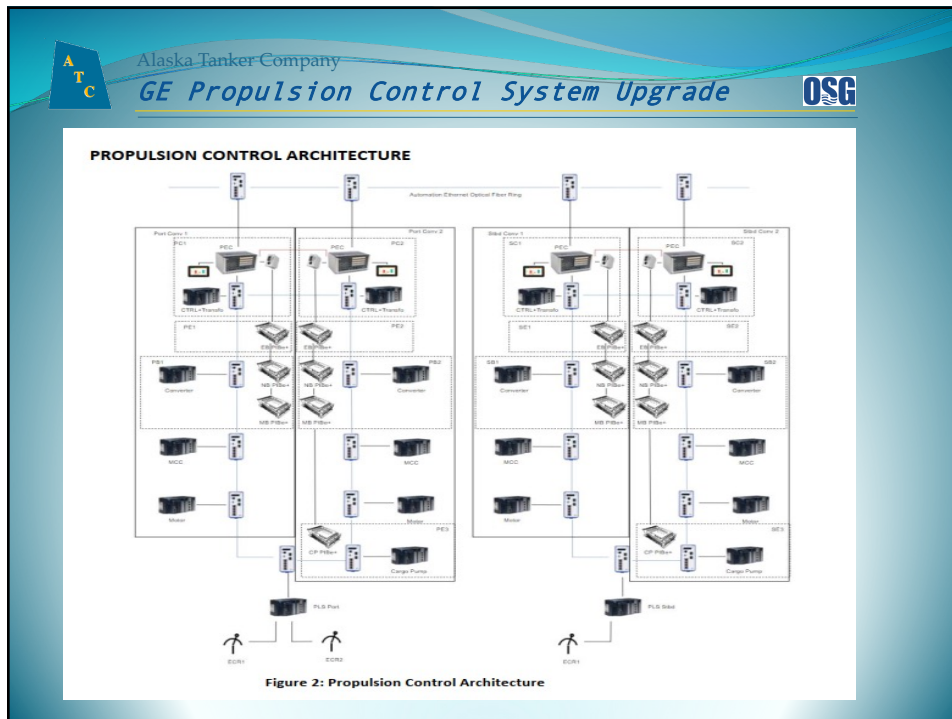
Alaska Tanker Company
GE Propulsion Control System Upgrade **OSG**

- The older system components are obsolete, tend to overheat, and is a 20-year-old technology. This upgrade has computers with more capacity, easy to replace components, standard equipment used in the industry, modern solid-state components. More technical support available worldwide because of the standardize equipment.
- Replaced older communication cables with new advanced Fiber Optic cables to handle the sensitivity and speed of the new hardware components.

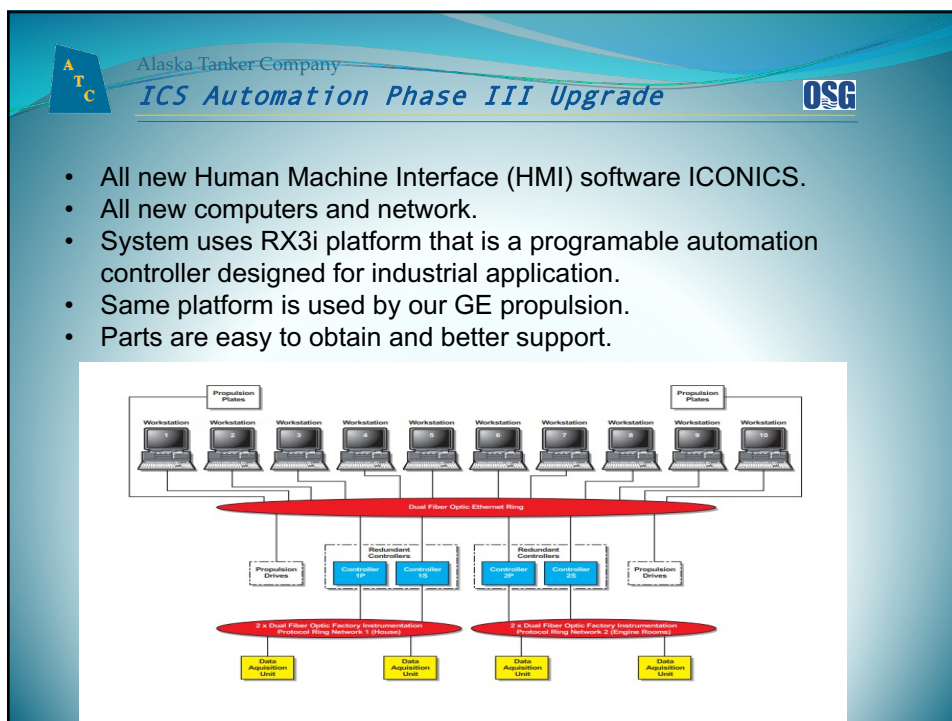
9



10



11



12

Alaska Tanker Company
Cargo Gauging System SAAB Tank Radar
 G5

OSC

- The previous gauging system SAAB Tank Radar G3 was no longer supported after 20 years in service on Alaskan Class Vessels.
- The G5 System will be supported for the foreseeable future.




13

Alaska Tanker Company
Cargo Gauging System SAAB Tank Radar
 G5


OSC



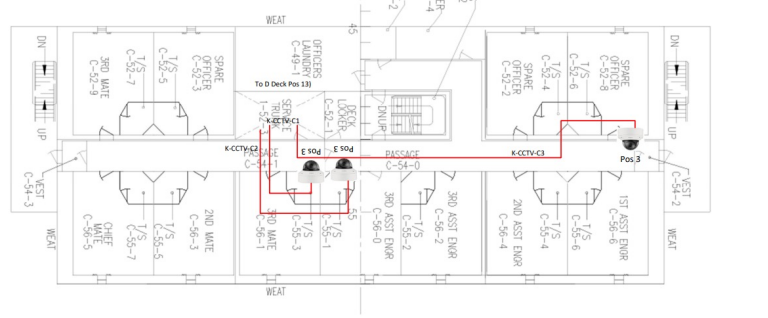
14



Alaska Tanker Company
Anti-SASH Camera System



- United States Coast Guard requirement to install cameras on each deck where there is access to living quarters.
- Camera coverage to capture all directions of the passageway.
- The audio and video is kept on a server that is locked and can only be accessed by IT.
- To be completed by next Drydocking. ATC is a year ahead of schedule as all four vessels have been completed in service.



15




Alaska Tanker Company
Anti-SASH Camera System







16

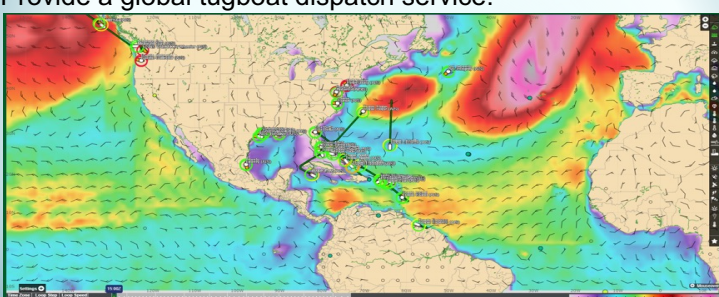


Alaska Tanker Company

Foss Maritime Weather Monitoring Center



- Foss Maritime 24-hour Weather Monitoring Center is a great benefit as Foss is part of the Saltchuk family of companies. This includes ATC, Foss, OSG, Tote, and Tropical.
- Monitor weather conditions around its customer vessels and their projected tracks. Knows the location of customer vessels 24/7.
- Alerts Saltchuk owned companies of any impending weather that may impact vessel safety.
- Provide a global tugboat dispatch service.



17