



**Marathon  
Petroleum Company LP**



## **Prince William Sound RCAC Mariner Class Discussion**

Captain Marc Bayer  
VP Marine Operations

January 28, 2022

# TYPES OF CLEAN PRODUCT TANKERS

	Capacity	Product	Attributes	Misc
MR1(Handy)	260-285,000 bbls	CPP / CHEMS / Edibles	Fit small terminals	
MR2	300-330,000 bbls	CPP / CHEMS / Edibles	Fit at most CPP terminals	~50,000 DWT commonly called "MR"
LR1 (Panamax)	450-500,000 bbls	CPP / CHEMS	More efficient long-haul than MRs due to greater volume	
LR2 (Aframax)	550-800,000 bbls	CPP	Most efficient for long haul due to large volume	Relatively rare, does not fit at many CPP terminals

*MR – Medium Range*

*LR – Long Range*

# IMO SHIP TYPES

## Product Tanker

A tanker designed for the carriage of refined petroleum products whose cargo tanks are usually coated with epoxy based paint to facilitate the cleaning of the tanker between the carriage of different cargoes and to prevent product contamination and hull corrosion. A product tanker typically has multiple cargo tanks capable of handling different cargoes simultaneously.

## IMO Ship Type 3

Chemical tanker intended to transport products with sufficiently severe environmental and safety hazards. These products require a moderate degree of containment to increase survival capability in a damaged condition. There is no filling restriction for chemicals assigned to Ship Type 3.

## IMO Ship Type 2

Intended to transport products with appreciably severe environmental and safety hazards which require significant preventive measures to preclude escape of such cargo. The quantity of cargo required to be carried in a Type 2 ship should not exceed 3,000 m<sup>3</sup> in any one tank.

## IMO Ship Type 1

Chemical tanker intended for the transportation of products considered to present the greatest overall hazard. The quantity of cargo required to be carried in a Type 1 ship should not exceed 1,250 m<sup>3</sup> in any one tank.

# BOB FRANCO





# BOB FRANCO SPECIFICATIONS

## BOB FRANCO

Official Number: 1245182



### Main Particulars:

Length: 120 ft.  
Beam: 35 in.  
Draft Loaded: 19 ft. 3 in.  
Depth: 19 ft. 3 in.

### Capacities:

Fuel: 142,850 gallons  
Water: 6,534 gallons  
Lube: 1,137 gallons  
Hydraulic: 1,263 gallons

### Regulatory:

Built: 2013 Portland OR  
Gross Tonnage: 156 GRT 496 ITC  
Net Tonnage: 106 NRT 148 ITC  
Call Sign: WDG8180  
ABS: Loadline, hull Ice Class - DO

### Machinery:

(2) Caterpillar C175 -16 Tier III  
5360hp @ 1,600 RPM, Tier 2/3  
(2) Schottel 1515 - FP

### Z Drives:

### Wheels:

Stainless Steel prop,  
2,600 mm diameter.

### Auxiliaries:

(2) John Deere Powertech 6135 AFM 75

### Performance:

Bollard Pull Ahead: 63.8 short tons  
Bollard Pull Astern: 70.24 short tons  
Range: n/a

### Deck Machinery & Fendering:

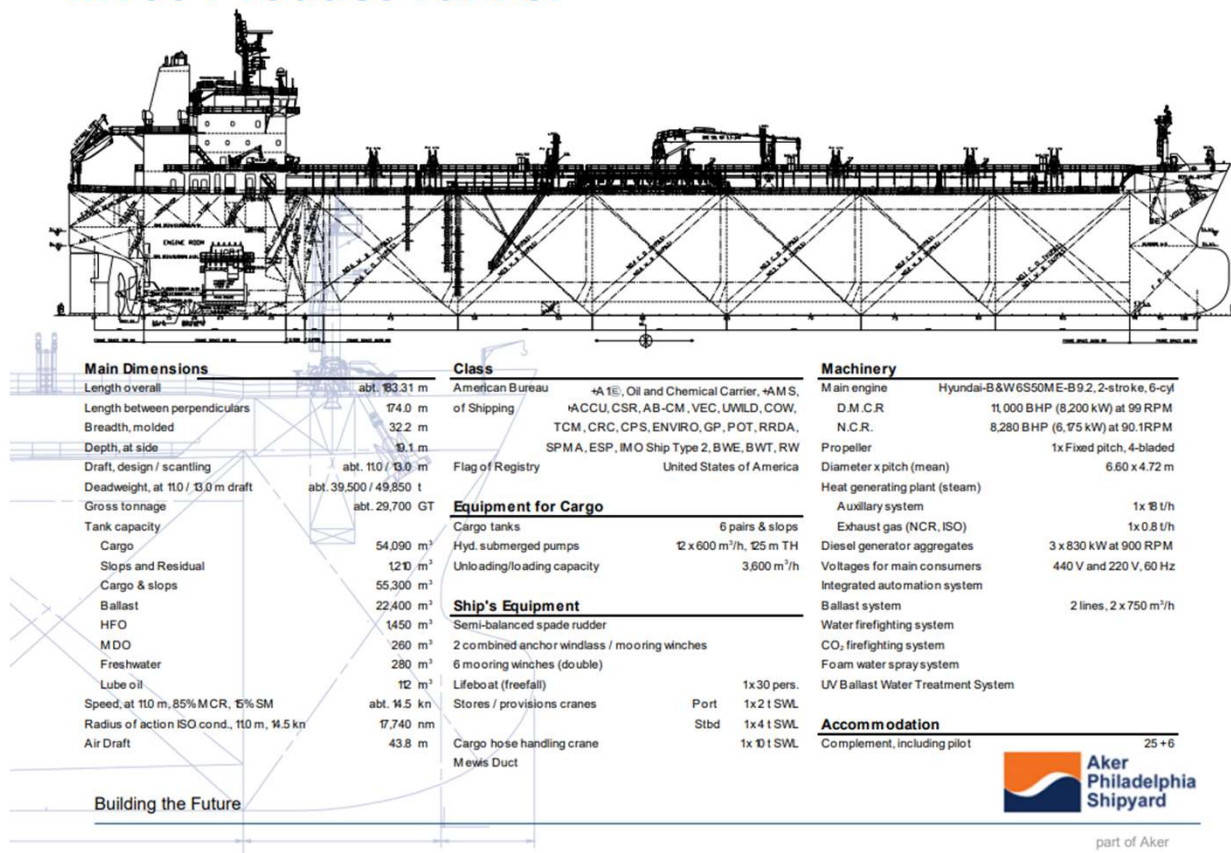
Markey TESD - 34 Double Drum Tow Winch w/2,600 ft.  
Markey DEPCF - 52 Bow Winch 750' x 10"  
Shibata and Schuyler Fendering w/tires.  
Rapp Hydra-Pro HP 25-5 ton crane

### Fire Fighting Equipment:

Two (2) Stang monitors, one forward one aft of the pilot house  
Flowserv 6LR-18A Split casing pump, with a rated output  
of 1400 gpm @ 250hp.

# TEXAS, LOUISIANA, WEST VIRGINIA, OHIO AMERICAN ENDURANCE, AMERICAN FREEDOM

## MT50 Product Tanker



# MARATHON INTERNATIONAL FLAG TIME CHARTERS

## ■ Six New Build Foreign Flag Medium Range (MR tankers)

### ■ Builder Hyundai Mipo Ulsan Korea

- Owner: Sinokor – Korean
- Technical Manager: Synergy – Singapore
- Flag: Majuro Marshall Islands
- Term - 5 years
- Delivered March – July 2021
- IMO 2/3
- Eco design
- Open loop scrubbers
- Tier 3 engines
- Alaska winterized
- Capacity - 340MB
- Heat coils
- Ballast Water Treatment

1. Frontier Mariner
2. Lone Star Mariner
3. Redwood Mariner
4. Evergreen Mariner
5. Blue Grass Mariner
6. Pelican Mariner

# COOK INLET WINTERIZATION ENHANCEMENTS

- Arctic PPE for personnel
- Sea-Chest – Hard pipe connection to S/E for injection of air, steam and recirculated hot water
- Insulation/heat tracing
  - Ability to drain manifold/top lines/Marpol after completion cargo
  - Insulation with steam tracing and/or steam hose wrapped around piping
- 12 mooring lines on winches with a minimum BS of 60 MT
- Insulation/heat tracing on IG and the Deck- Non-return Valve and Deck Isolation Valves to protect electronics and pneumatic valves
- Electric Heater in the deck house
- Additional heating in wheelhouse, steering gear, Emergency Diesel, paint locker, forward storeroom, engine control room
- Class approved connection from engine room bilge to deck slop tank
- Deck runoff Wilden Pumps modified for cold weather.
- Deck Air Compressor - Air dryer.



# TECHNICAL MANAGER

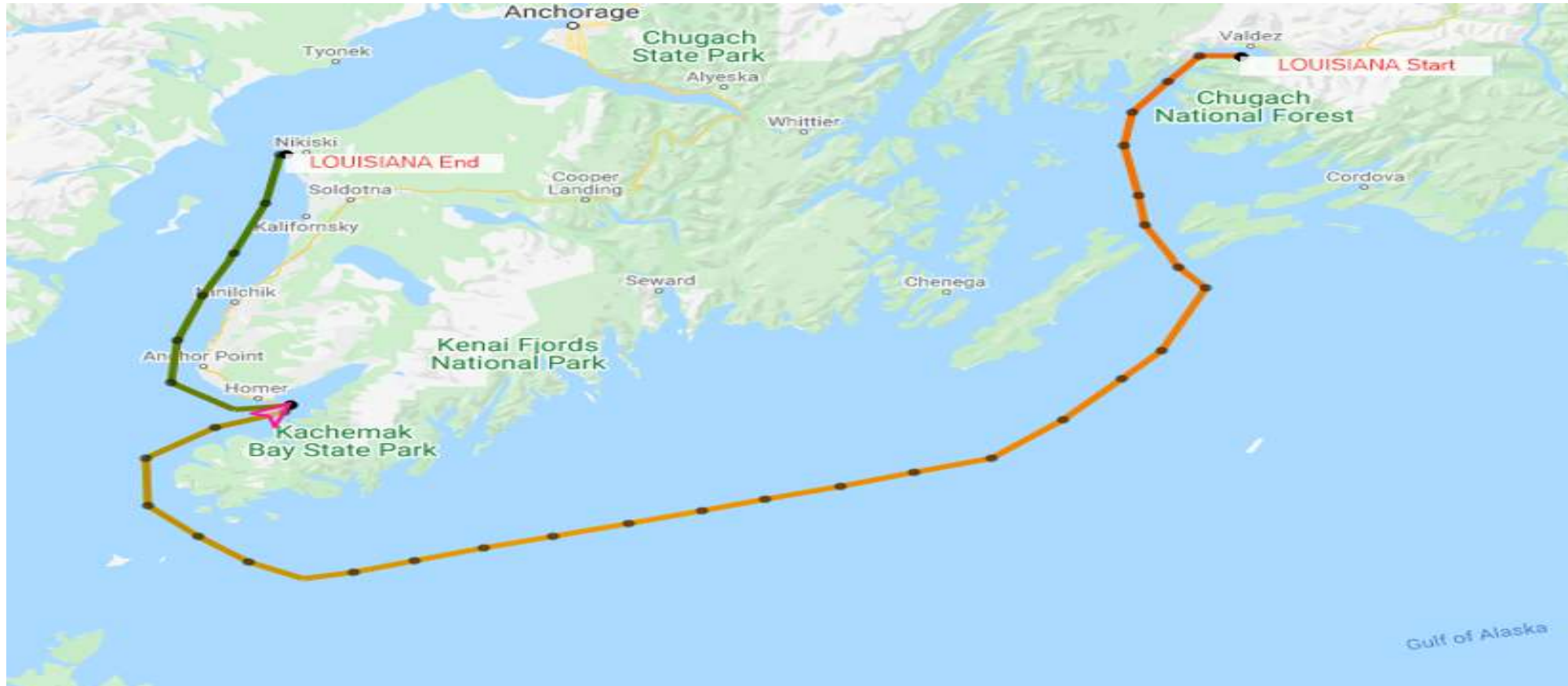


*SYNERGY GROUP*

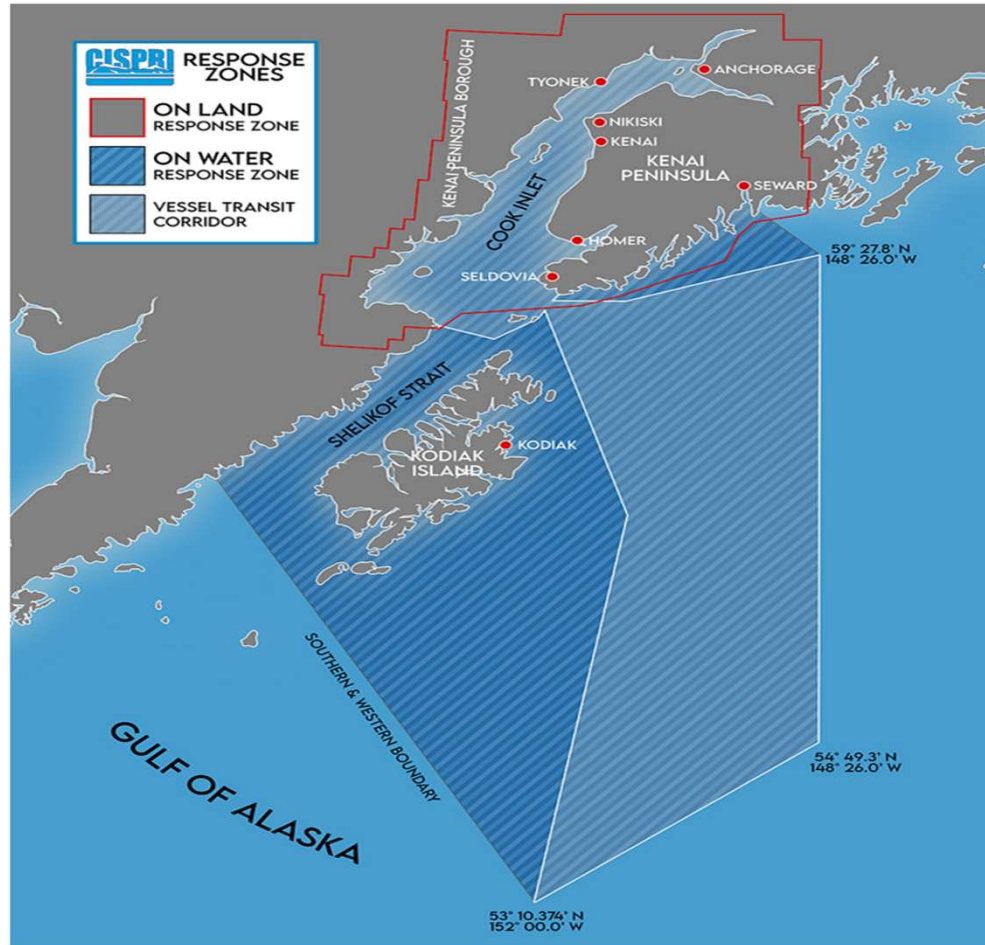
*. Safety . Empathy . Integrity*

People with a passion for excellence

# VESSELS TRANSITING ENTRANCE



# CISPRI/SERVS COVERAGE



# PRINCIPLES OF OPERATION

## OUR PRINCIPLES OF OPERATION

1. Do it safely or not at all.
2. There is always time to do it right.
3. We operate at the pleasure of the community.
4. Always report promptly all incidents and near-miss events.

## STOP WORK OBLIGATION



As an employee or contractor for Marathon Petroleum, you should always comply with our Tenets of Safe Operations. You have the responsibility and the authority to stop any work that does not comply with these tenets – and there will be no repercussions.

**That is our commitment to you.**

**Marc Bayer**  
Marine Operations, SR Director  
210.626.4414

**Mark Nielsen**  
Marine Operations, Manager  
210.626.4703

## OUR TENETS OF SAFE OPERATIONS



1. Always operate within design and environmental limits.
2. Always operate in a safe and controlled condition.
3. Always ensure safety devices are in place and functioning.
4. Always follow safe work practices and procedures.
5. Always meet or exceed customer requirements.
6. Always maintain integrity of dedicated systems.
7. Always comply with all applicable rules and regulations.
8. Always address abnormal conditions.
9. Always follow written procedures for high-risk or unusual situations.
10. Always involve the right people in decisions that affect procedures and equipment.

# LION OF CALIFORNIA

## 1985



Built 1954  
DWT 16, 451  
Capacity 150,000 bbls  
LOA 515'  
Beam 66'  
Propulsion Steam  
Fuel – Bunker C



# FRONTIER MARINER





# TEXAS



## FRONTIER MARINER

# FRONTIER MARINER



# REDWOOD MARINER ANCHORAGE NOV 28





# QUESTIONS



Lone Star Mariner